



## MARELLA - TECHNICAL SPECIFICATION

### Principal Particulars

Built:	Australia 1984 - vessel fully refitted 2014
Size:	24.9m x 9.5m
Light draft:	1.75m
Laden draft:	2.25m
Weight:	Dead weight 154 tonnes
Survey:	Department Transport M & H No. 3026 Class 2B to 200NM offshore Class 2D for 113 special personal + 4 crew (WA) Uniform Shipping Laws Code Stability book prepared in 2014

### Engine

Main Engines:	Main engines 2 x 3406B Caterpillar. Remove the reconditioned 5500 hrs ago.
Consumption:	Fuel burn at 8 knots 0.075 tonnes per hour
Props:	Twin screw fixed pitch
Speed:	Service speed, 8 knots, max speed 10 knots
Gensets:	1 x Ford Lees 55KVA, 1 x Perkins 45KVA
Gearboxes:	Twin disc gearbox

### Capacities

Fuel	20.0 tonnes
Water:	11 tonnes
Area of clear deck:	140m <sup>2</sup>
Clear deck measures:	15.8m x 7.2m
Total carrying capacity:	80 tonnes
Hiab:	4 tonne Hiab fitted for FRC and or survey transducer poles. New Palfinger PC 52000 C Deck crane fitted 2014

### Electronics

SSB Furuno  
2 x VHF ICOM.  
Furuno GPS/WAAS Navigator GP-32  
Furuno 72NM radar  
Auto pilot TMQ  
Furuno depth sounder  
Gen sets. 1 x new 175 KVA Cummins. 1 x 45 KVA Perkins.

### Accommodation

10 air-conditioned berths (4 crew & 6 passengers)  
Accommodation 4 x crew / 6 x pax , 2 x shower and toilets c/w sullage and grey water tanks.

### Galley

Galley fully equipped for offshore projects  
150ltr freezer, 1 x 210 ltr fridge, 2 x 250 ltr fridge  
1 x 7kg Washing and drying machines.

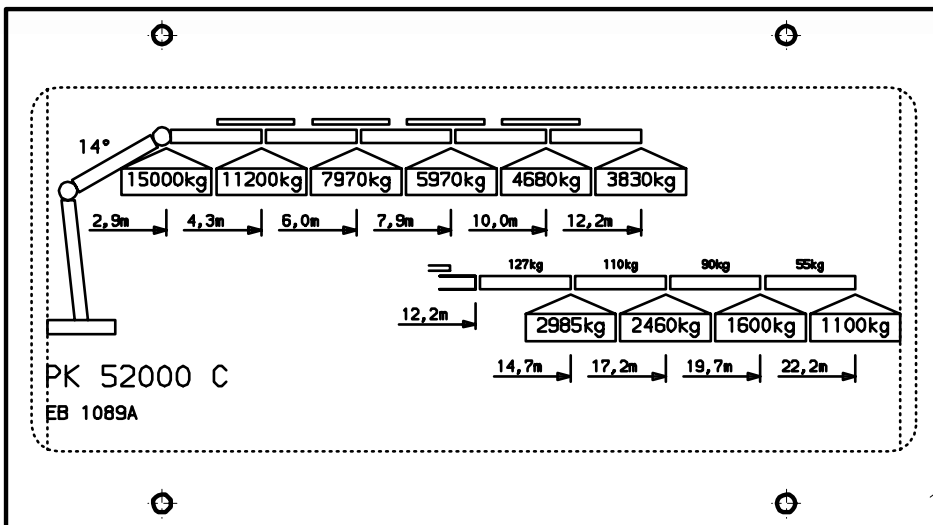
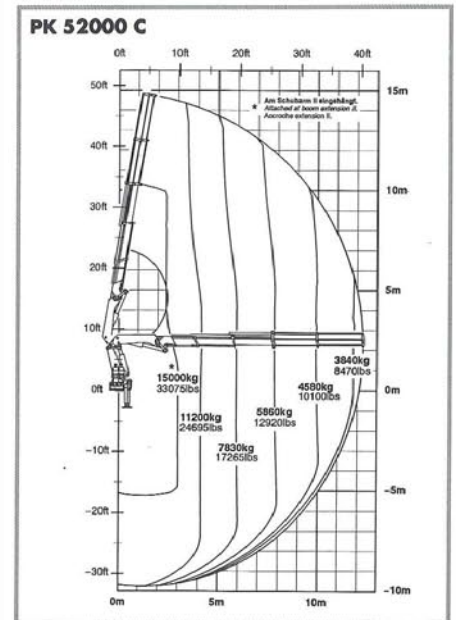


CELEBRATING 25 YEARS OF SERVICE



## MARELLA - TECHNICAL SPECIFICATION PK 52000C HIGH POWER-LIFTING SYSTEM

Technical specifications (DIN 15018 H1-B3)	Type PK 52000
Max. lifting moment	486.6 kNm (49.6 mt, 358750 ft-lbs)
Standard outreach	7.8 m (25' 7")
Hydraulic reach PK 52000 A PK 52000 B PK 52000 C	7.7 m (25' 3") 9.9 m (32' 6") 12.2 m (40' 0")
Slewing torque net Slewing range	49.1 kNm (5 mt, 36155 ft-lbs) endless
Stabilizer spread (standard)	6.48 m (21' 3")
Folded width Height folded Mounting space Height unfolded (boom resting on platform) Min. transport length (boom resting on platform)	2.45 m (8' 0") 2.35 m (7' 9") approx. 1.35 m (4' 5") 2.92 m (9' 7") 4.20 m (13' 9")
Loading height at crane column (1 m outreach)	2.57 m (8' 5")
Max. operating pressure (psi) Recommended pump capacity Oil tank with return filter, filling capacity	30.5 MPa (305 bar, 4423 psi) 70 l./min. (15.4 imp.gal./min.) 255 l. (56.1 imp.gal./min.)
Weight (without mounting parts, pump, oil)	50.2 kN (5115 kg, 11280 lbs)



CELEBRATING 25 YEARS OF SERVICE